


StarPRNT Intelligence
'unified, multi-model driver and configuration suite'

Software

Installation Manual

Contents

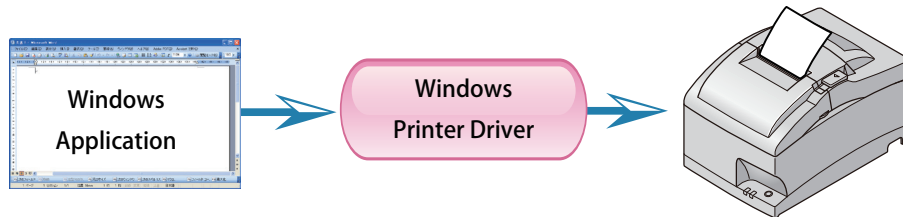
1. Software Overview	1
1.1 Windows Printer Driver	1
1.2 Printer Utility	2
1.2.1 Starting the Printer Utility.....	2
1.2.2 Printer Utility Functions.....	3
2. Operating Environment	6
2.1 Operating System	6
2.2 Supported Functions (Interface / Emulation)	6
3. Installation	10
4. Uninstallation	15
5. Revision History	17
Appendix 1. FVP10 Sample Sounds	18
Appendix 2. Pairing with Bluetooth in Windows.....	19
Appendix 3.	
How to Allow a program to communicate through Windows Firewall.....	28

1. Software Overview

StarPRNT Intelligence is a software package that supports multiple printer models. This software package contains the Windows printer driver and a printer utility. To use the software package, follow the procedure given in chapter 3, "Installation," and then turn the printer on.

1.1 Windows Printer Driver

The Windows printer driver is used when files are printed from Windows applications.

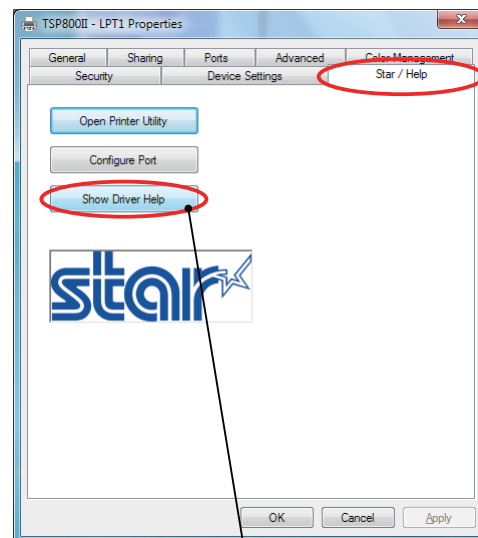
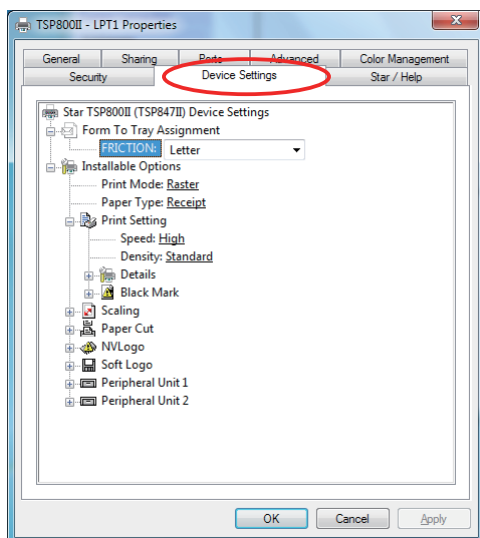
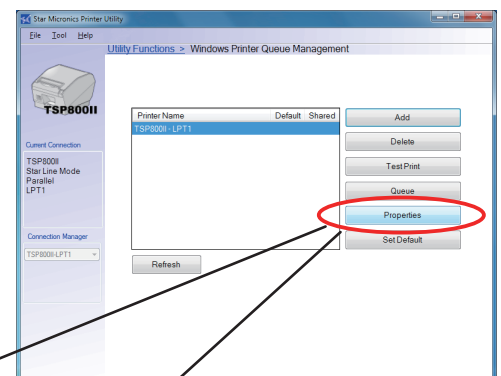


Install the Star Printer Software, and then connect a printer with a USB interface to the PC. The Plug and Play feature will enable the Windows printer driver automatically.

To use the Windows printer driver when you are connecting to the printer through an interface other than USB, install the driver from the Windows Printer Queue Management window of the printer utility.

When using the printer through the Windows printer driver, you can set options such as the paper type, paper cut type, and logo print method by clicking Properties in the Windows Printer Queue Management window of the printer utility.

For details about the printer driver, see the printer driver help.



Starting the Printer Utility Help

1.2 Printer Utility

The printer utility is used to connect to the printer and to set various options.

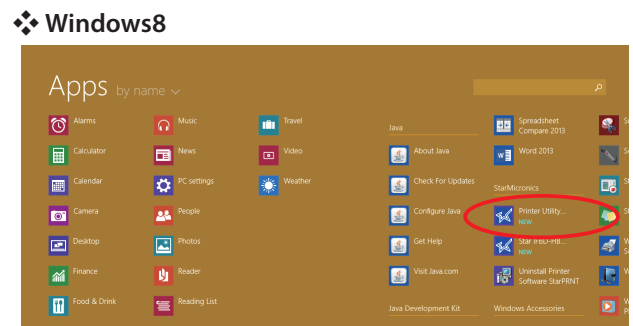
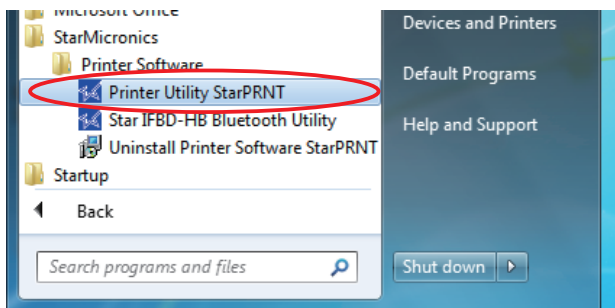
It can be used in conjunction with the Windows printer driver, OPOS driver, and in numerous other environments.

The printer utility is used over a specific "Connection" (each "Connection" has specific properties such as the printer model and connection method). Depending on the specifications of the connection, the utility functions that are displayed vary (see section 2.2, "Supported Functions").

For details on how to configure connections and on the utility functions, see the printer utility help.

1.2.1 Starting the Printer Utility

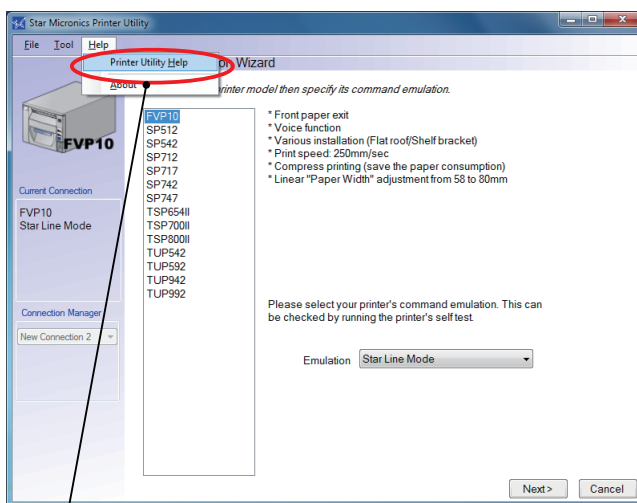
- ① On the Windows taskbar, click 'Start', and then click 'All Programs' > 'Star Micronics' > 'Printer Software' > 'Printer Utility StarPRNT' .



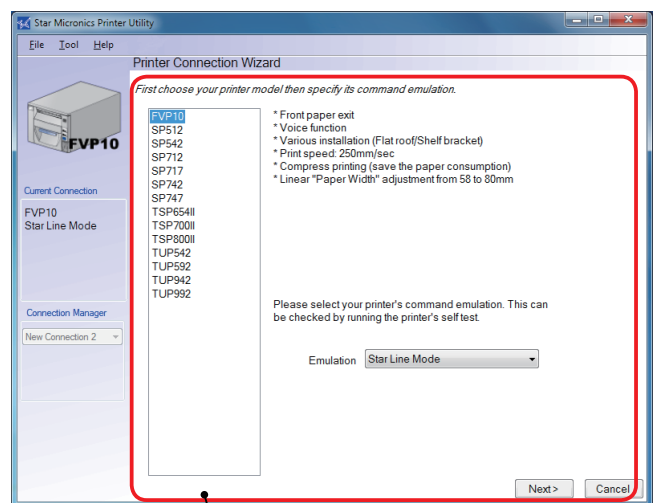
- ② If you are using Windows Vista, Windows 7, Windows 8 or Windows 8.1, the 'User Account Control' dialog appears. Click 'Yes'.

- ③ The printer utility window opens.

When you start the printer utility for the first time, the 'Printer Connection Wizard' appears. Specify settings such as the printer model that you are using, the command emulation, and the interface to create a connection. You will be able to use the printer utility functions through the connection that you created.



Starting the Printer Utility Help



Printer Connection Wizard

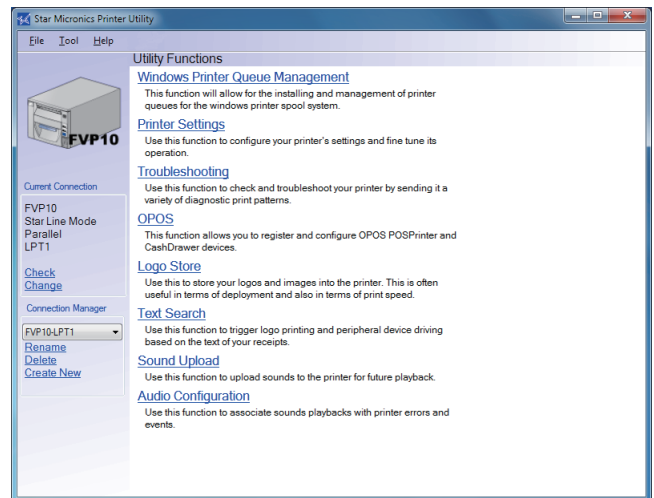
1.2.2 Printer Utility Functions

Utility Functions

Click a link in the list of utility functions to display the properties of the corresponding function.

The printer utility is used over a specific connection (each connection has specific properties such as the connection method).

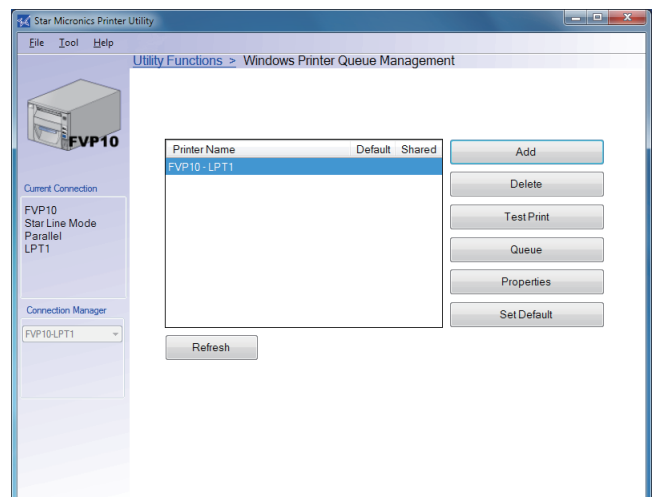
Depending on the specifications of the connection, the utility functions that are displayed vary.



Windows Printer Queue Management

Windows Printer Queue Management can be used to create and manage the printer queues of the Windows print spooler system.

To use the printer driver when you are connecting to the printer through an interface other than USB, install the Windows printer driver from this function.

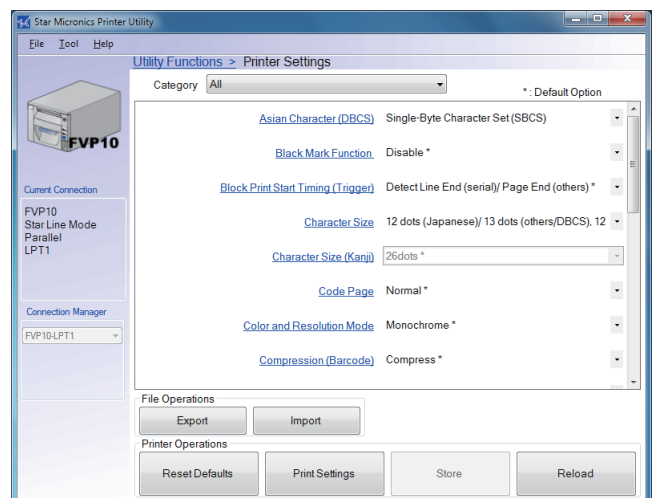


Printer Settings

You can change the printer settings (memory switch settings) according to your needs.

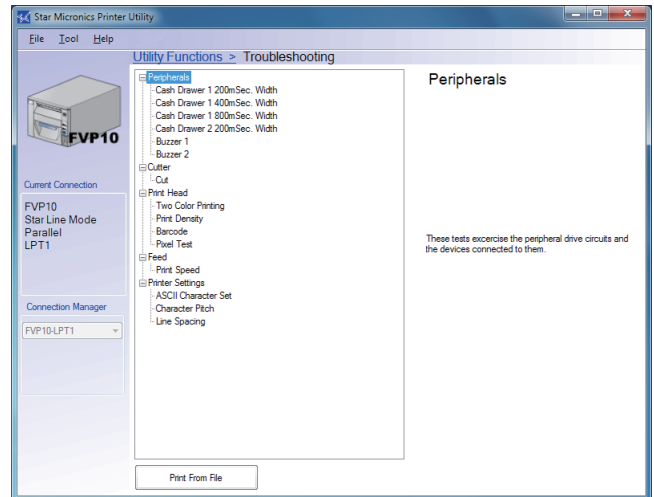
What are memory switches ?

You can configure the basic settings of a printer and store them in memory switches on the printer.



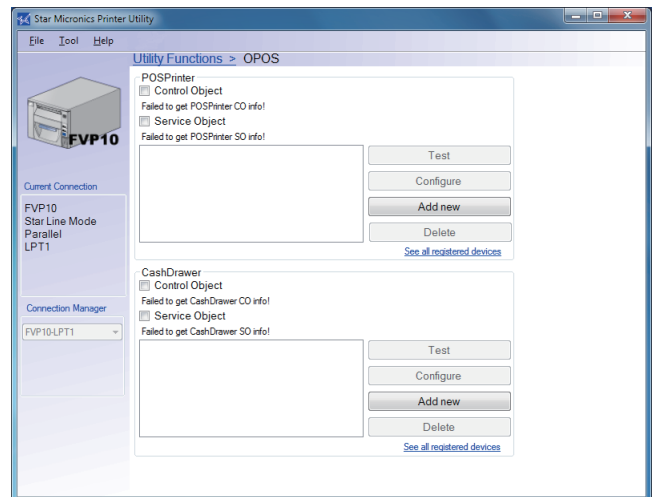
◆ **Troubleshooting**

You can check the operations of various printer functions.



◆ **OPOS**

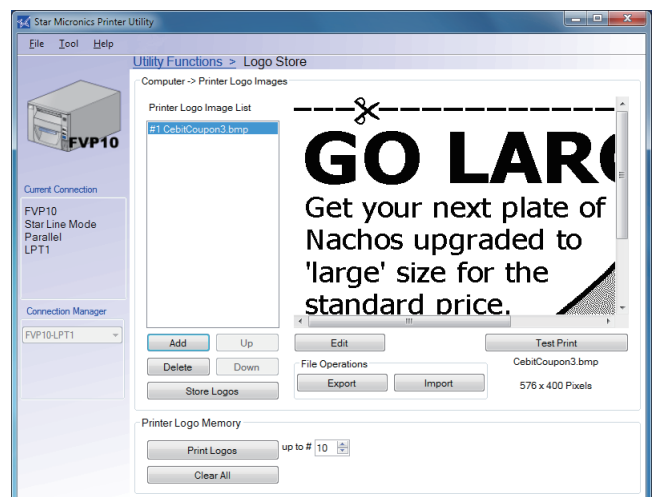
You can store, configure, and perform similar tasks for OPOS POS printer devices and cash drawer devices.



◆ **Logo Store**

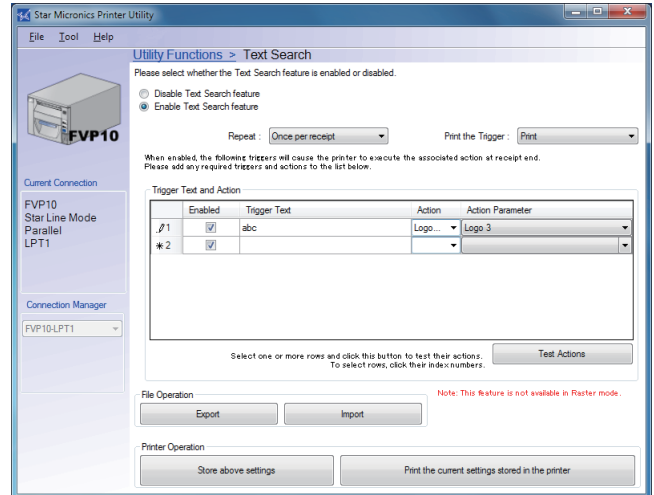
You can store logos (image data) in the printer's memory.

By storing logo and other image data that is printed frequently, you can expect increased print throughput, because there is no need to send the data every time you print.



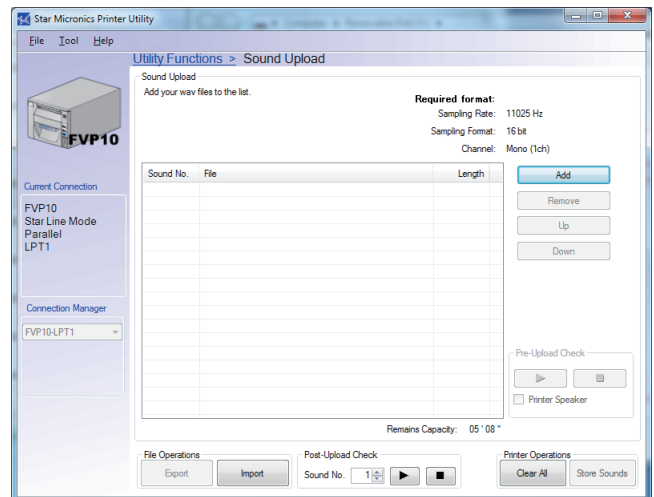
◆ **Text Search**

You can set the text to search for and the operation that is performed when text is detected. The Text Search function searches for the specified text in the print data. Upon the detection of the text, the printer cuts the receipt and then performs an operation that you have set. The operations that you can set include printing logos and generating sounds (only for models that support this feature).



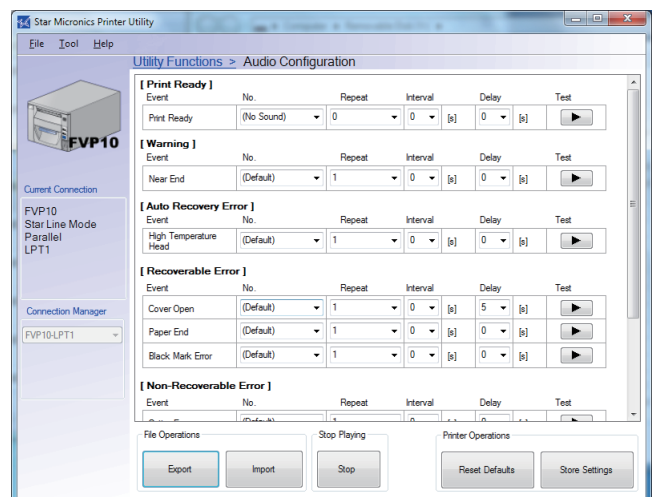
◆ **Sound Upload**

You can store audio data (.wav files) in the printer's memory. The stored audio data can be used by the printer driver and the Text Search and Audio Configuration functions.



◆ **Audio Configuration**

You can set the sounds that are generated when events such as errors occur on the printer.



2. Operating Environment

2.1 Operating System

This software supports the following operating systems.

- ◆ Microsoft Windows 8.1* 32bit/64bit (except Windows RT)
- ◆ Microsoft Windows 8* 32bit/64bit (except Windows RT)
- ◆ Microsoft Windows 7 32bit/64bit
- ◆ Microsoft Windows Vista 32bit/64bit
- ◆ Microsoft Windows XP (SP3 or later)

*Limitation for Windows 8 / 8.1

- Star original Printer Driver Function (e.g. Logo Setting) can not be changed from “Modern UI”. However, once the setting of its function is changed from “Desktop UI”,these function can be used on “Modern UI” as well.
- USB Printer will not be appeared in [Device and Printer] if its power is off.
- Error status (e.g. Paper empty during printing) will not be shown in “Modern UI”.

2.2 Supported Functions (Interface / Emulation)

The following tables indicate the utility functions that you can use for each combination of the different interfaces and emulation modes. One table is given for each model.

FVP10	Star Line Mode Emulation						ESC/POS Mode Emulation					
	USB I/F Printer Class	USB I/F Vendor Class	Ethernet I/F	Parallel I/F	Serial I/F	Bluetooth I/F	USB I/F Printer Class	USB I/F Vendor Class	Ethernet I/F	Parallel I/F	Serial I/F	Bluetooth I/F
Windows Printer Queue Management	○	×	○	○	○	-	-	×	×	×	×	-
Printer Settings	○	○	○	○	○	-	-	○	○	○	○	-
Troubleshooting	○	○	○	○	○	-	-	○	○	○	○	-
OPOS	○	○	○	○	○	-	-	×	×	×	×	-
Logo Store	○	○	○	○	○	-	-	○	○	○	○	-
Text Search	○	○	○	○	○	-	-	○	○	○	○	-
Sound Upload	○	○	○	○	○	-	-	○	○	○	○	-
Audio Configuration	○	○	○	○	○	-	-	○	○	○	○	-

SP500	Star Line Mode Emulation						ESC/POS Mode Emulation					
	USB I/F Printer Class	USB I/F Vendor Class	Ethernet I/F	Parallel I/F	Serial I/F	Bluetooth I/F	USB I/F Printer Class	USB I/F Vendor Class	Ethernet I/F	Parallel I/F	Serial I/F	Bluetooth I/F
Windows Printer Queue Management	○	×	○	○	○	-	-	×	×	×	×	-
Printer Settings	○	○	○	○	○	-	-	○	○	○	○	-
Troubleshooting	○	○	○	○	○	-	-	○	○	○	○	-
OPOS	○	○	○	○	○	-	-	×	×	×	×	-
Logo Store	-	-	-	-	-	-	-	-	-	-	-	-
Text Search	-	-	-	-	-	-	-	-	-	-	-	-
Sound Upload	-	-	-	-	-	-	-	-	-	-	-	-
Audio Configuration	-	-	-	-	-	-	-	-	-	-	-	-

SP700	Star Line Mode Emulation						ESC/POS Mode Emulation					
	USB I/F Printer Class	USB I/F Vendor Class	Ethernet I/F	Parallel I/F	Serial I/F	Bluetooth I/F	USB I/F Printer Class	USB I/F Vendor Class	Ethernet I/F	Parallel I/F	Serial I/F	Bluetooth I/F
Windows Printer Queue Management	○	×	○	○	○	-	-	×	×	×	×	-
Printer Settings	○	○	○	○	○	-	-	○	○	○	○	-
Troubleshooting	○	○	○	○	○	-	-	○	○	○	○	-
OPOS	○	○	○	○	○	-	-	×	×	×	×	-
Logo Store	○	○	○	○	○	-	-	○	○	○	○	-
Text Search	-	-	-	-	-	-	-	-	-	-	-	-
Sound Upload	-	-	-	-	-	-	-	-	-	-	-	-
Audio Configuration	-	-	-	-	-	-	-	-	-	-	-	-

TSP650II	Star Line Mode Emulation						ESC/POS Mode Emulation					
	USB I/F Printer Class	USB I/F Vendor Class	Ethernet I/F	Parallel I/F	Serial I/F	Bluetooth I/F	USB I/F Printer Class	USB I/F Vendor Class	Ethernet I/F	Parallel I/F	Serial I/F	Bluetooth I/F
Windows Printer Queue Management	○	×	○	○	○	○	-	×	×	×	×	×
Printer Settings	○	○	○	○	○	○	-	○	○	○	○	○
Troubleshooting	○	○	○	○	○	○	-	○	○	○	○	○
OPOS	○	○	○	○	○	○	-	×	×	×	×	×
Logo Store	○	○	○	○	○	○	-	○	○	○	○	○
Text Search	○	○	○	○	○	○	-	○	○	○	○	○
Sound Upload	-	-	-	-	-	-	-	-	-	-	-	-
Audio Configuration	-	-	-	-	-	-	-	-	-	-	-	-

TSP700II	Star Line Mode Emulation						ESC/POS Mode Emulation					
	USB I/F Printer Class	USB I/F Vendor Class	Ethernet I/F	Parallel I/F	Serial I/F	Bluetooth I/F	USB I/F Printer Class	USB I/F Vendor Class	Ethernet I/F	Parallel I/F	Serial I/F	Bluetooth I/F
Printer Utility	○	○	○	○	○	-	-	○	○	○	○	-
Windows Printer Queue Management	○	×	○	○	○	-	-	×	×	×	×	-
Printer Settings	○	○	○	○	○	-	-	○	○	○	○	-
Troubleshooting	○	○	○	○	○	-	-	○	○	○	○	-
OPOS	○	○	○	○	○	-	-	×	×	×	×	-
Logo Store	○	○	○	○	○	-	-	○	○	○	○	-
Text Search	-	-	-	-	-	-	-	-	-	-	-	-
Sound Upload	-	-	-	-	-	-	-	-	-	-	-	-
Audio Configuration	-	-	-	-	-	-	-	-	-	-	-	-

TSP800II	Star Line Mode Emulation						ESC/POS Mode Emulation						Star Page Mode Emulation					
	USB I/F Printer Class	USB I/F Vendor Class	Ethernet I/F	Parallel I/F	Serial I/F	Bluetooth I/F	USB I/F Printer Class	USB I/F Vendor Class	Ethernet I/F	Parallel I/F	Serial I/F	Bluetooth I/F	USB I/F Printer Class	USB I/F Vendor Class	Ethernet I/F	Parallel I/F	Serial I/F	Bluetooth I/F
Printer Utility	○	○	○	○	○	-	-	○	○	○	○	-	-	○	○	○	○	-
Windows Printer Queue Management	○	×	○	○	○	-	-	×	×	×	×	-	-	×	×	×	×	-
Printer Settings	○	○	○	○	○	-	-	○	○	○	○	-	-	○	○	○	○	-
Troubleshooting	○	○	○	○	○	-	-	○	○	○	○	-	-	○	○	○	○	-
OPOS	○	○	○	○	○	-	-	×	×	×	×	-	-	×	×	×	×	-
Logo Store	○	○	○	○	○	-	-	○	○	○	○	-	-	○	○	○	○	-
Text Search	-	-	-	-	-	-	-	-	-	-	-	-	-	-	-	-	-	-
Sound Upload	-	-	-	-	-	-	-	-	-	-	-	-	-	-	-	-	-	-
Audio Configuration	-	-	-	-	-	-	-	-	-	-	-	-	-	-	-	-	-	-

TUP500	Star Line Mode Emulation						ESC/POS Mode Emulation						Star Page Mode Emulation					
	USB I/F Printer Class	USB I/F Vendor Class	Ethernet I/F	Parallel I/F	Serial I/F	Bluetooth I/F	USB I/F Printer Class	USB I/F Vendor Class	Ethernet I/F	Parallel I/F	Serial I/F	Bluetooth I/F	USB I/F Printer Class	USB I/F Vendor Class	Ethernet I/F	Parallel I/F	Serial I/F	Bluetooth I/F
Printer Utility	○	○	○	○	○	-	-	○	○	○	○	-	-	○	○	○	○	-
Windows Printer Queue Management	○	×	○	○	○	-	-	×	×	×	×	-	-	×	×	×	×	-
Printer Settings	○	○	○	○	○	-	-	○	○	○	○	-	-	○	○	○	○	-
Troubleshooting	○	○	○	○	○	-	-	○	○	○	○	-	-	○	○	○	○	-
OPOS	○	○	○	○	○	-	-	×	×	×	×	-	-	×	×	×	×	-
Logo Store	○	○	○	○	○	-	-	○	○	○	○	-	-	○	○	○	○	-
Text Search	-	-	-	-	-	-	-	-	-	-	-	-	-	-	-	-	-	-
Sound Upload	-	-	-	-	-	-	-	-	-	-	-	-	-	-	-	-	-	-
Audio Configuration	-	-	-	-	-	-	-	-	-	-	-	-	-	-	-	-	-	-

TUP900	Star Line Mode Emulation						ESC/POS Mode Emulation						Star Page Mode Emulation					
	USB I/F Printer Class	USB I/F Vendor Class	Ethernet I/F	Parallel I/F	Serial I/F	Bluetooth I/F	USB I/F Printer Class	USB I/F Vendor Class	Ethernet I/F	Parallel I/F	Serial I/F	Bluetooth I/F	USB I/F Printer Class	USB I/F Vendor Class	Ethernet I/F	Parallel I/F	Serial I/F	Bluetooth I/F
Printer Utility	○	○	-	○	○	-	-	○	-	○	○	-	-	○	-	○	○	-
Windows Printer Queue Management	○	×	-	○	○	-	-	×	-	×	×	-	-	×	-	×	×	-
Printer Settings	○	○	-	○	○	-	-	○	-	○	○	-	-	○	-	○	○	-
Troubleshooting	○	○	-	○	○	-	-	○	-	○	○	-	-	○	-	○	○	-
OPOS	○	○	-	○	○	-	-	×	-	×	×	-	-	×	-	×	×	-
Logo Store	○	○	-	○	○	-	-	○	-	○	○	-	-	○	-	○	○	-
Text Search	-	-	-	-	-	-	-	-	-	-	-	-	-	-	-	-	-	-
Sound Upload	-	-	-	-	-	-	-	-	-	-	-	-	-	-	-	-	-	-
Audio Configuration	-	-	-	-	-	-	-	-	-	-	-	-	-	-	-	-	-	-

3. Installation

If drivers or utility software or both other than StarPRNT Intelligence have previously been installed for your printer, uninstall these drivers and utilities before you install this software.

Important:

- Administrator privilege is required to run the installation.
- Some of the features that you could use with previous drivers and utility software cannot be used with this software. Before you replace the software that you are using, refer to the release notes to confirm the features that are available with the new software.
- StarPRNT Intelligence 2.0 does not support TSP650.
You cannot install and use StarPRNT Intelligence 2.0 and TSP650 together on the same computer. First, delete the TSP650 printer queue and the TSP650 connection information.

❖ For TSP650 Users

Use StarPRNT Intelligence 1.5 as this supports TSP650.

Follow the instructions below to install the software.

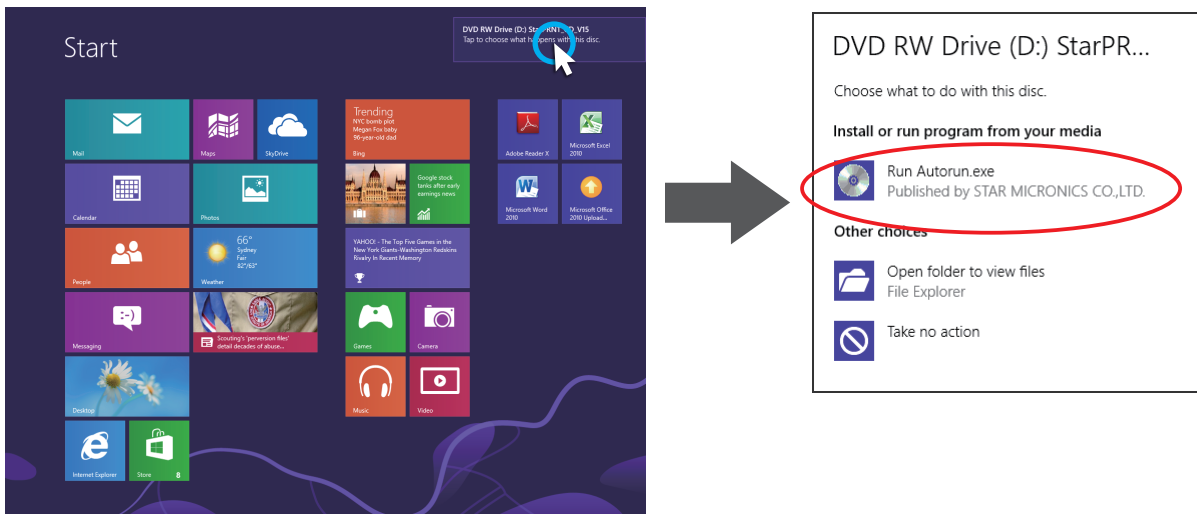
Note: If you are connecting to the printer by USB, carry out the instructions in chapter 3, "Installation," and then turn the printer on.

- ① Insert the CD-ROM that came with the printer into the CD-ROM drive.
If the following window appears, click 'Run Autorun.exe'.



❖ In Windows8 / 8.1

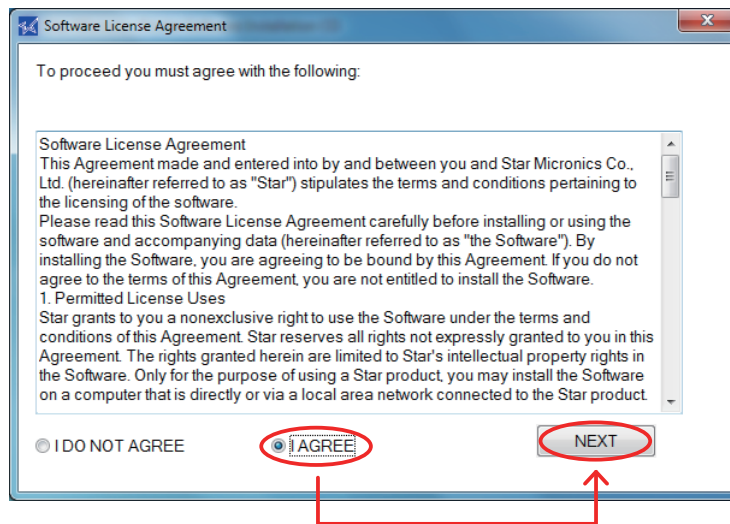
Toast pop up will be appeared after CD-ROM is set. After that, click [Run Autorun.exe].



- ② The software installation CD window opens. Click 'Install!'.



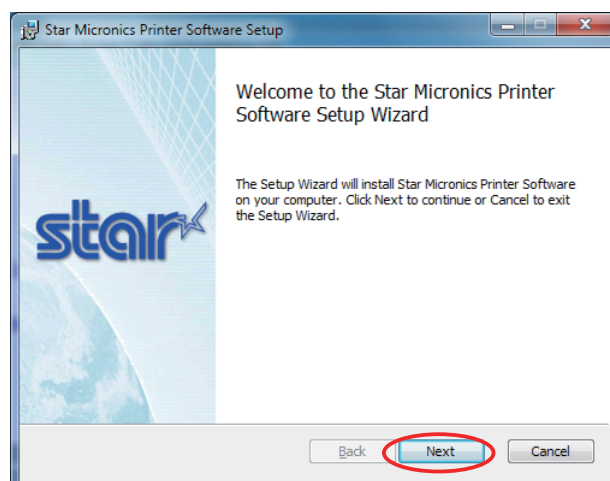
- ③ The software license agreement for using the contents of the CD appears. Read the agreement. If you agree with the terms, select 'I AGREE', and then click 'NEXT'.



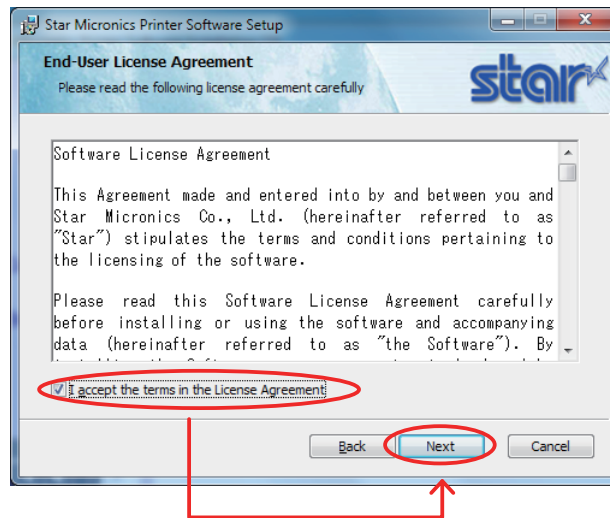
Point! If you click on any of the items on the software installation CD window, the software license agreement for using the contents of the CD will appear and will remain until you agree with its terms.

- ④ If you are using Windows Vista, Windows 7, Windows 8 or Windows 8.1, the 'User Account Control' dialog appears. Click 'Yes'.

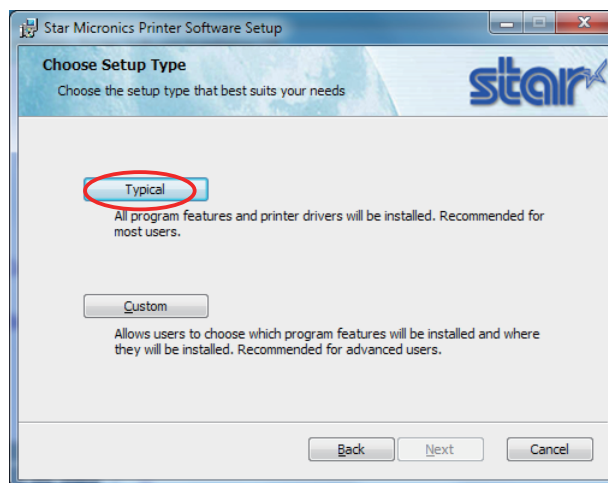
- ⑤ Click 'Next'.



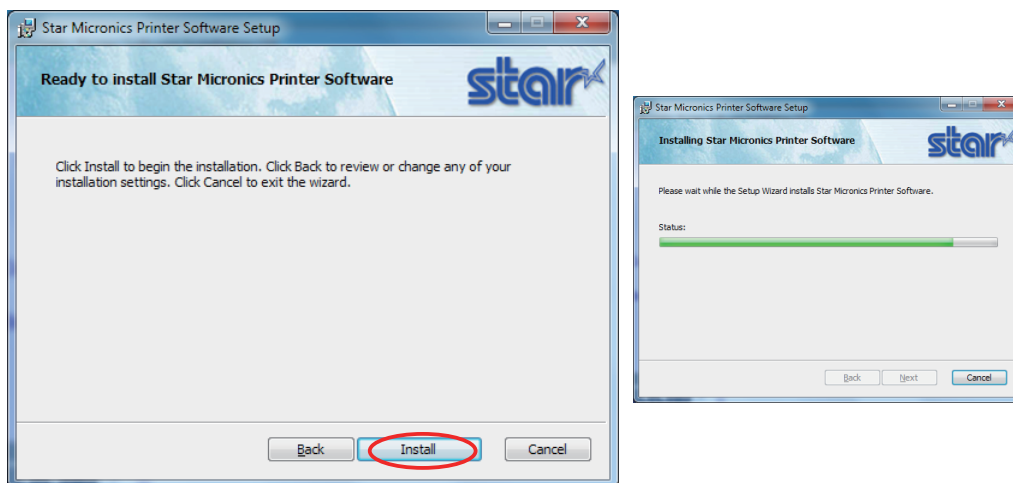
- ⑥ The End-User License Agreement, an agreement for installing the software, appears. Read the agreement. If you agree with the terms, select the 'I accept the terms in the License Agreement' check box, and then click 'Next'.



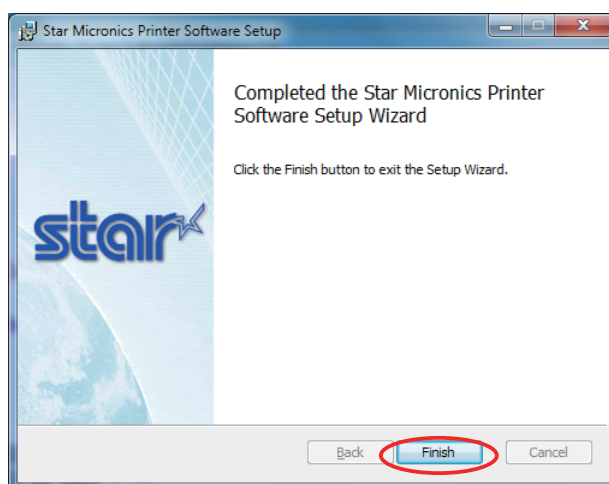
- ⑦ Choose the setup type. Click 'Typical' to install the all program features. Always select this option unless you have a specific reason. Click 'Custom' to install only the program features that you will need.



⑧ Click 'Install' to start the installation.



⑨ When the software installation completes, the following window appears. Click 'Finish' to close the wizard.



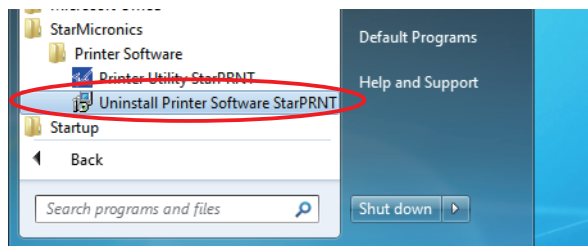
⑩ Click 'Exit' to close the software installation CD window.



4. Uninstallation

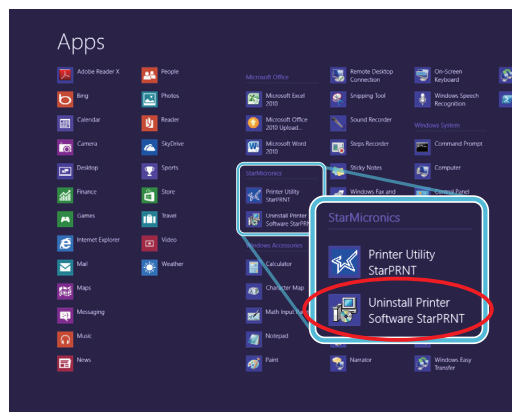
Follow the procedure below to uninstall the software.

- ① Turn the printer power switch off.
- ② On the Windows taskbar, click 'Start', and then click 'All Programs' > 'Star Micronics' > 'Printer Software' > 'Uninstall Printer Software StarPRNT'.

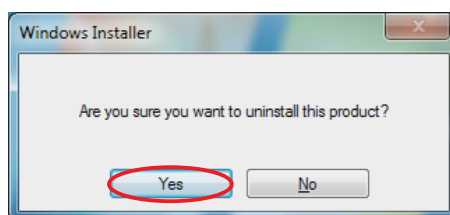


❖ In Windows 8 / 8.1

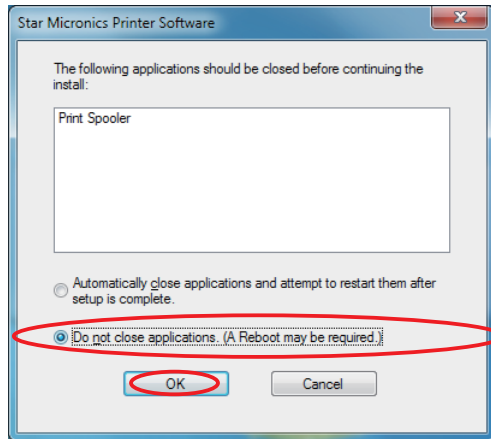
On the Apps, select [Star Micronics]-[Uninstall Printer Software StarPRNT].



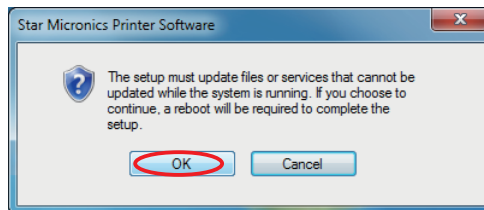
- ③ If you are using Windows Vista, Windows 7, Windows 8 or Windows 8.1, the 'User Account Control' dialog appears. Click or 'Yes'.
- ④ The following window appears. To continue, click 'Yes'.



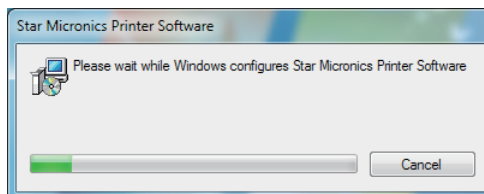
- ⑤ If the following confirmation dialog box appears, select the 'Do not close applications' option, and then click 'OK'.



- ⑥ If the following confirmation window appears, click 'OK'.



- ⑦ The uninstallation program starts and removes all the relevant software components.



5. Revision History

Rev. No.	Date of Revision	Changes
Rev. 1.0	Mar . 2010	First edition.
Rev. 1.1	Jul . 2010	Add TSP700II / TSP650 / SP700 / SP500.
Rev. 1.3	Nov. 2011	Add support Linux, MacOS. Added Software Overview.
Rev. 1.4	Apr. 2012	Add TUP500 / TUP900.
Rev. 1.5	Oct. 2012	Add support Windows 8.
Rev. 2.0	Feb. 2013	Add Support TSP650II. / TSP650 not supported. / Add Appendix 2. Pairing with Bluetooth in Windows
Rev. 2.1	Feb. 2014	Add support Windows 8.1.

Notice

- Apple is a trademark of Apple Inc., registered in the U.S. and other countries.
- Android is a trademark of Google Inc.
- Company and product names are trademarks or registered trademarks of their respective companies.
- Reproduction of any part of this documentation is prohibited.
- The contents of this documentation are subject to change without notice.
- We can assume no responsibility for any results which may come out of the usage instructed in this documentation.

Appendix 1. FVP10 Sample Sounds

The following audio files are preinstalled in the FVP10.

Sound No.	Audio Message	Name of the Downloadable File
Sound 1	Welcome!	SP_EN01.wav
Sound 2	Thank you!	SP_EN02.wav
Sound 3	Order coming in.	SP_EN03.wav
Sound 4	Drink Order coming in.	SP_EN04.wav
Sound 5	Food Order coming in.	SP_EN05.wav
Sound 6	Order has been cancelled.	SP_EN06.wav
Sound 7	New order coming in.	SP_EN07.wav
Sound 8	Order to go coming in.	SP_EN08.wav
Sound 9	Print finished.	SP_EN09.wav
Sound 10	Please take your receipt.	SP_EN10.wav
Sound 11	Please come again.	SP_EN11.wav
Sound 12	Please give your receipt to the operator.	SP_EN12.wav
Sound 13	Now printing, please wait a moment.	SP_EN13.wav
Sound 14	Please do not pull the paper until printing finishes.	SP_EN14.wav
Sound 15	Thank you for visiting.	SP_EN15.wav
Sound 16	Please take the number ticket.	SP_EN16.wav
Sound 17	Please have a seat and wait a moment.	SP_EN17.wav
Sound 18	Thank you for your purchase.	SP_EN18.wav
Sound 19	Please wait here, we will guide you shortly.	SP_EN19.wav

You can play back the preinstalled audio files by selecting the appropriate 'Sound No.' from various functions such as the 'Audio Configuration Function' and 'Text Search Function' of the printer driver and printer utility.

The preinstalled audio files are stored in the printer's user-data area. If you store new audio files by using the printer utility's 'Sound Upload Function' or by sending commands directly to the printer, all the preinstalled audio files will be cleared.

You can download the FVP10's preinstalled audio files from the following URL. You can use them again by uploading the files that you want to use to the FVP10.

<http://www.starmicronics.com/support/>

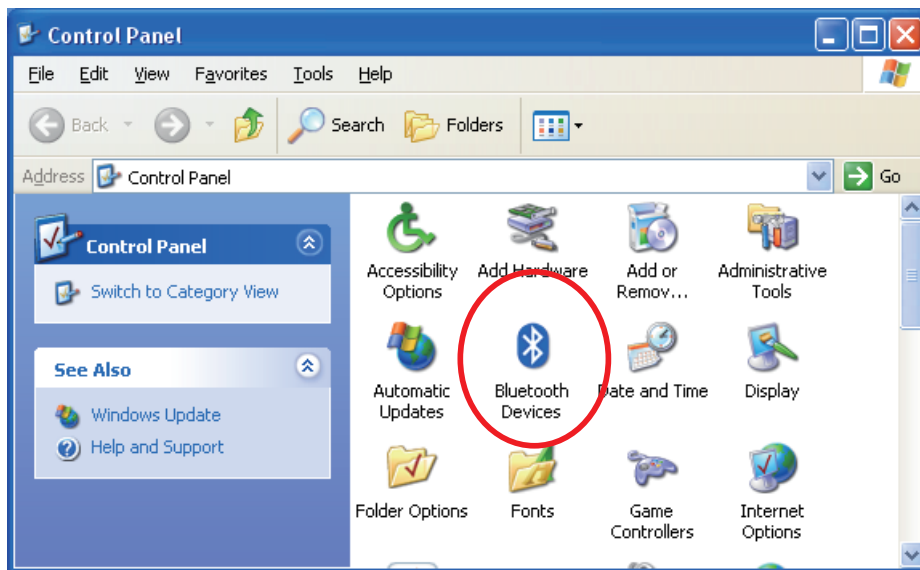
Point! The error-warning sounds in the printer are not cleared even if you upload new audio files to the printer.

Appendix 2. Pairing with Bluetooth in Windows

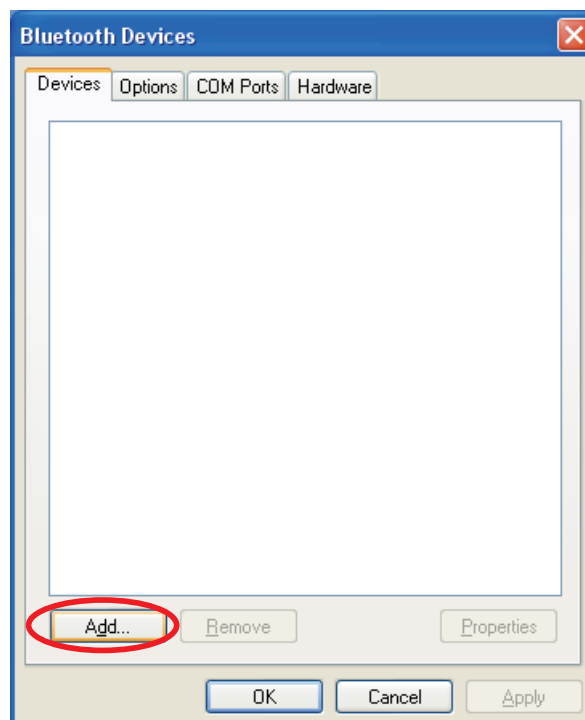
The Bluetooth pairing method differs depending on the Windows operating system. Follow the appropriate procedure.

❖ In Windows XP

1. On the Control Panel, click “Bluetooth Devices”.



2. On the “Devices” tab, click [Add].

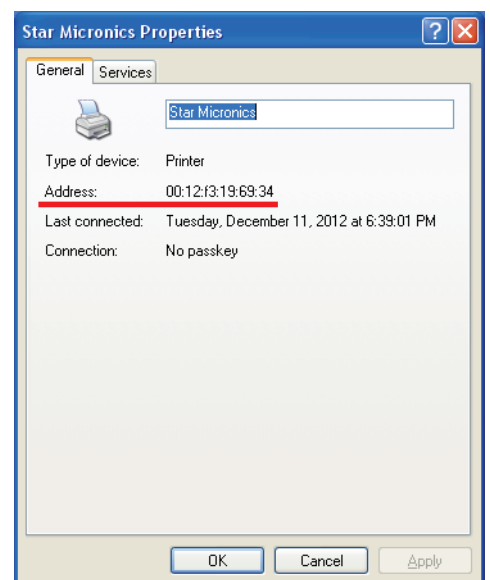
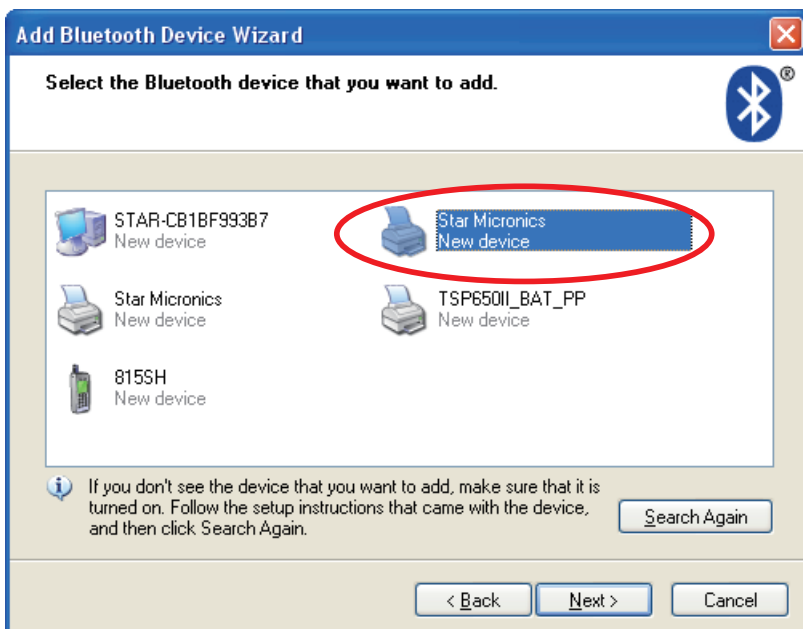


- When the Add Bluetooth Device Wizard is displayed, set up the printer as instructed on the screen*, and then click [Next].

* See the "Hardware Manual" for more information on operating the printer.



- Select the Bluetooth device you want to add from the list of devices displayed, and then click [Next]. If multiple Bluetooth devices are found, you can right-click the printer, select [Properties], and then check the Bluetooth address to specify the printer you want to pair.

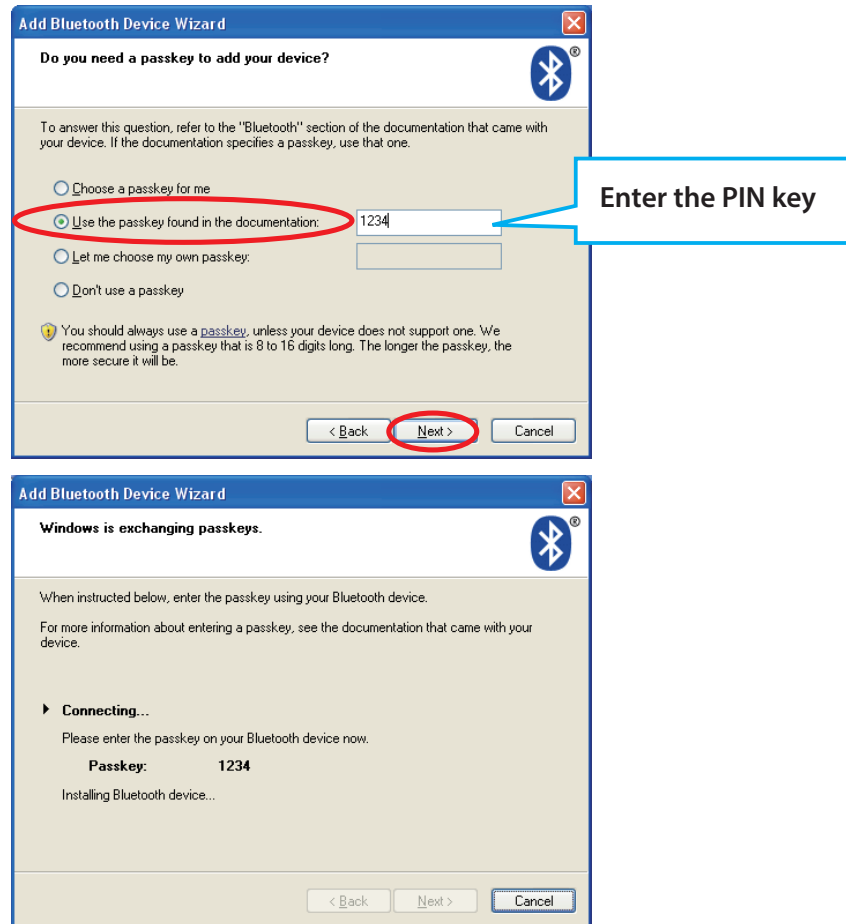


Checking the printer's Bluetooth address

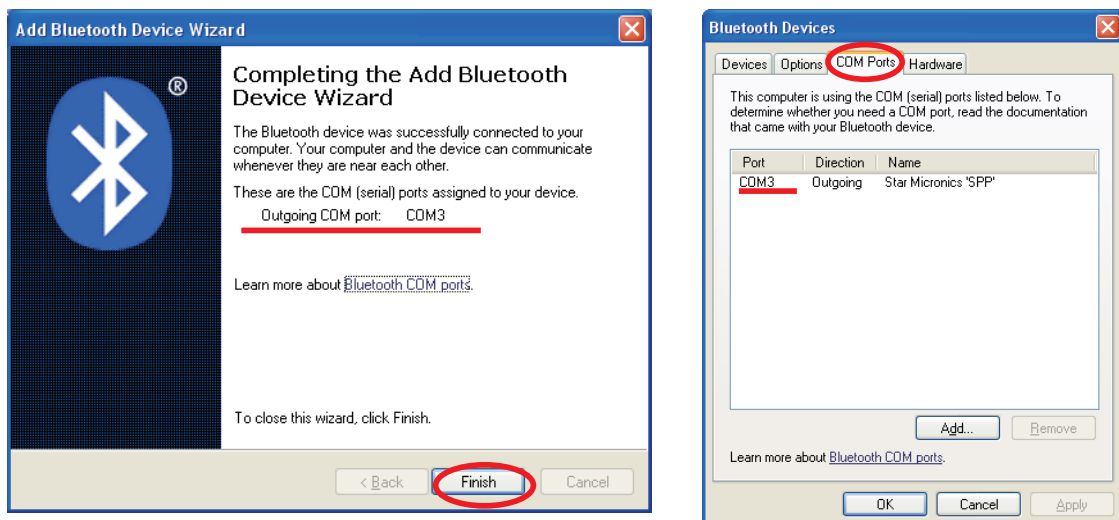
The Bluetooth address is listed under ***Bluetooth Information*** on the test print sheet. To print a test sheet, turn on the printer while holding down the TSP65011: Feed button.

5. Select “Use the passkey found in the documentation”, enter the passkey (PIN key*) for the printer for which you want to perform pairing, and then click [Next].

* See the “Hardware Manual” for more information for PIN key.

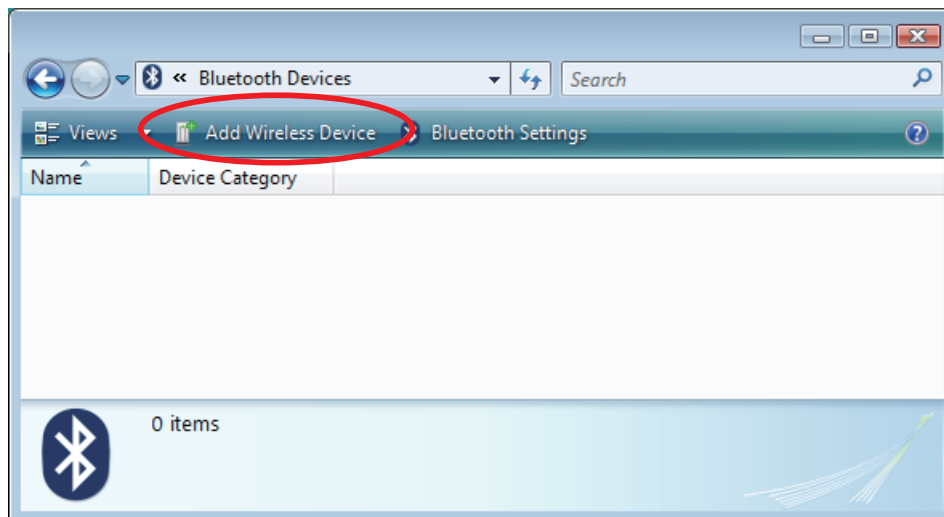
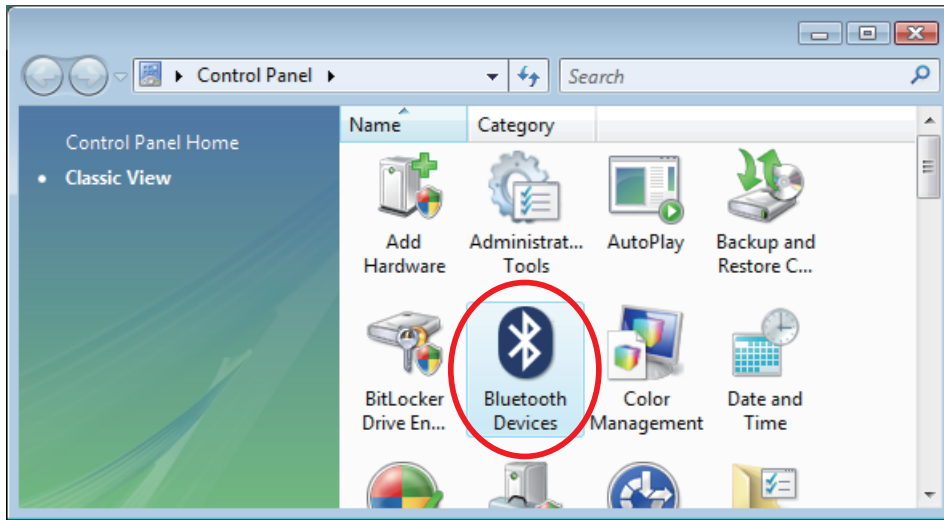


6. If pairing is successful after entering the PIN key, the Add Bluetooth Device Wizard is complete. The “COM serial ports assigned to your device” displayed here are necessary when making the printer’s communication settings. After the wizard is complete, you can check these ports from the “COM Ports” tab in “Bluetooth Devices” from the Control Panel. When pairing is complete, the following screen is displayed.



❖ In Windows Vista

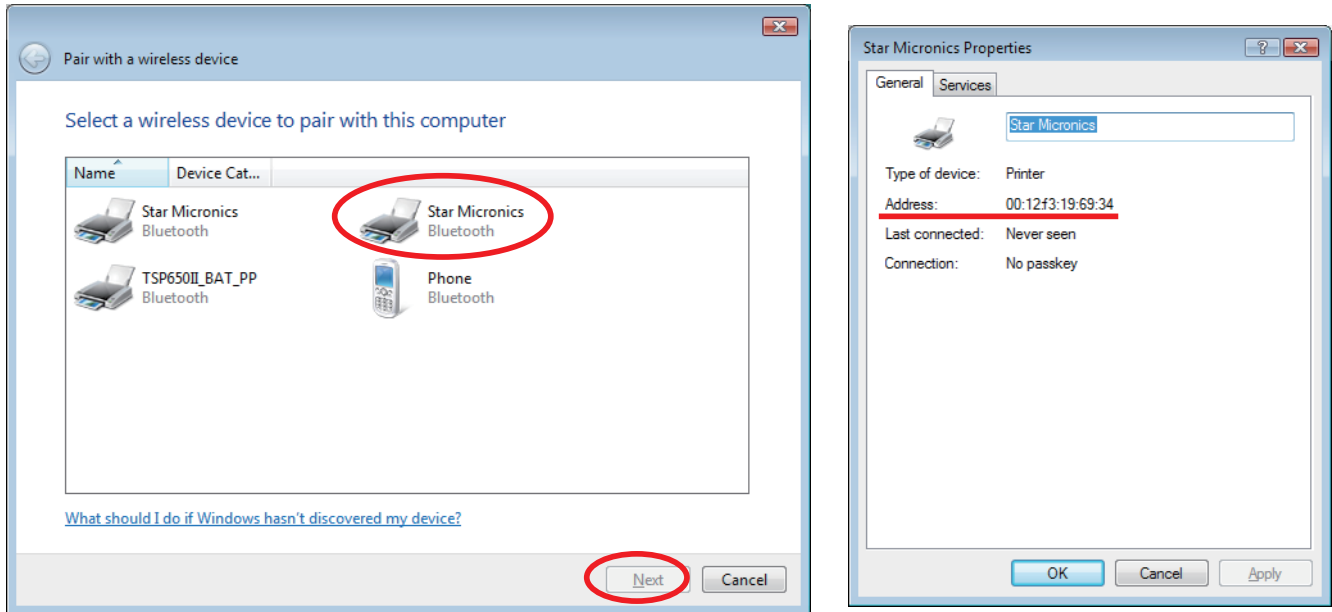
1. On the Control Panel, click "Bluetooth Devices". And click "Add Wireless Device".



- When the Pair with a wireless device window is displayed, set up the printer as instructed on the screen*, and then click [Next].

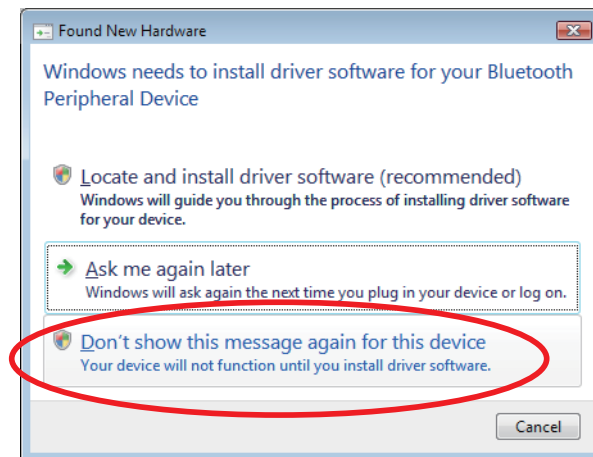
* See the “Hardware Manual” for more information on operating the printer.

- Select the Bluetooth device you want to add from the list of devices displayed, and then click [Next]. If multiple Bluetooth devices are found, you can right-click the printer, select [Properties], and then check the Bluetooth address to specify the printer you want to pair.

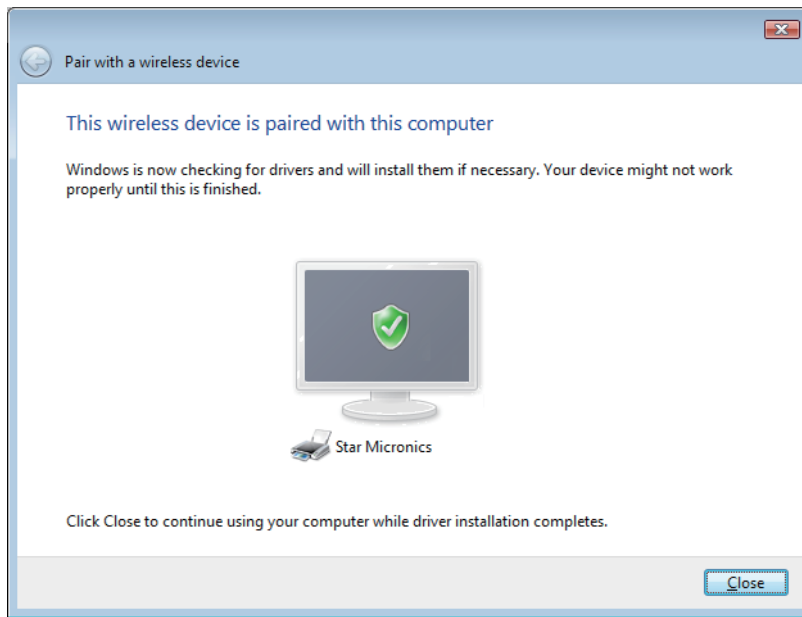


Checking the printer’s Bluetooth address
 The Bluetooth address is listed under ***Bluetooth Information*** on the test print sheet. To print a test sheet, turn on the printer while holding down the TSP65011: Feed button.

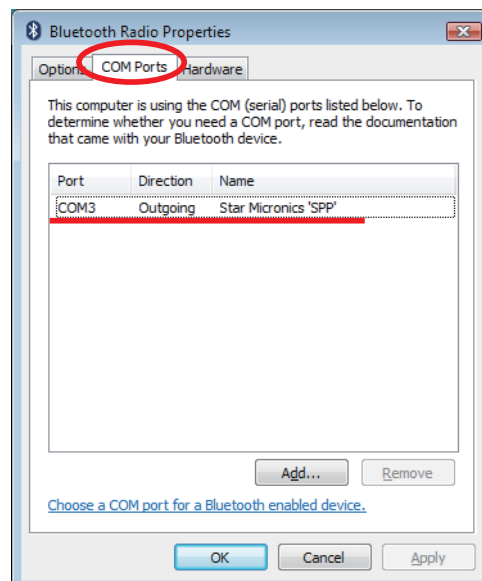
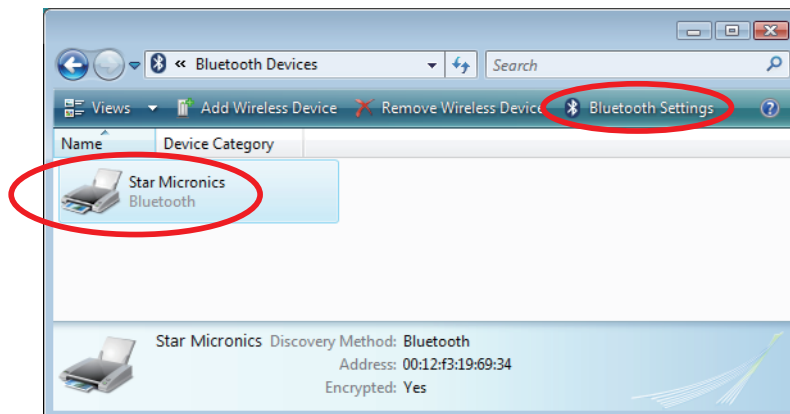
- When the following confirmation dialog box appears. Click the “Don’t show this message again for this device”.



5. When pairing is complete, the following screen is displayed.

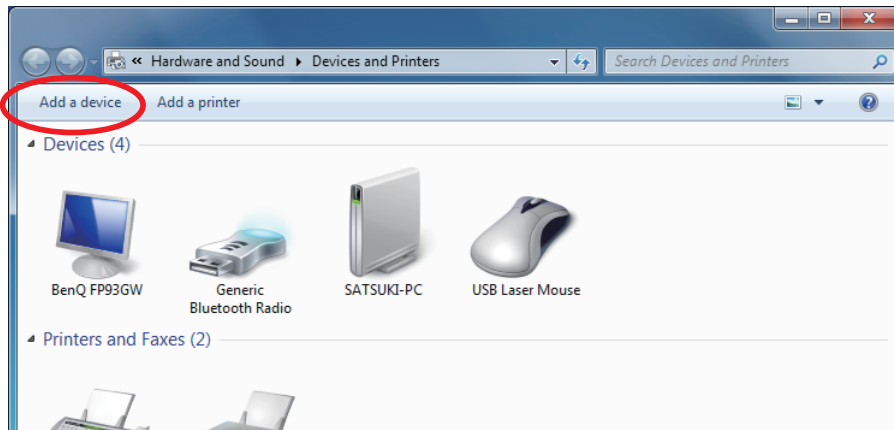


6. You can check the virtual COM port assigned by pairing the Bluetooth device from the "COM Ports" tab in "Bluetooth Devices" from the Control Panel. This information is necessary when making the printer's communication settings.



❖ In Windows 7 / 8

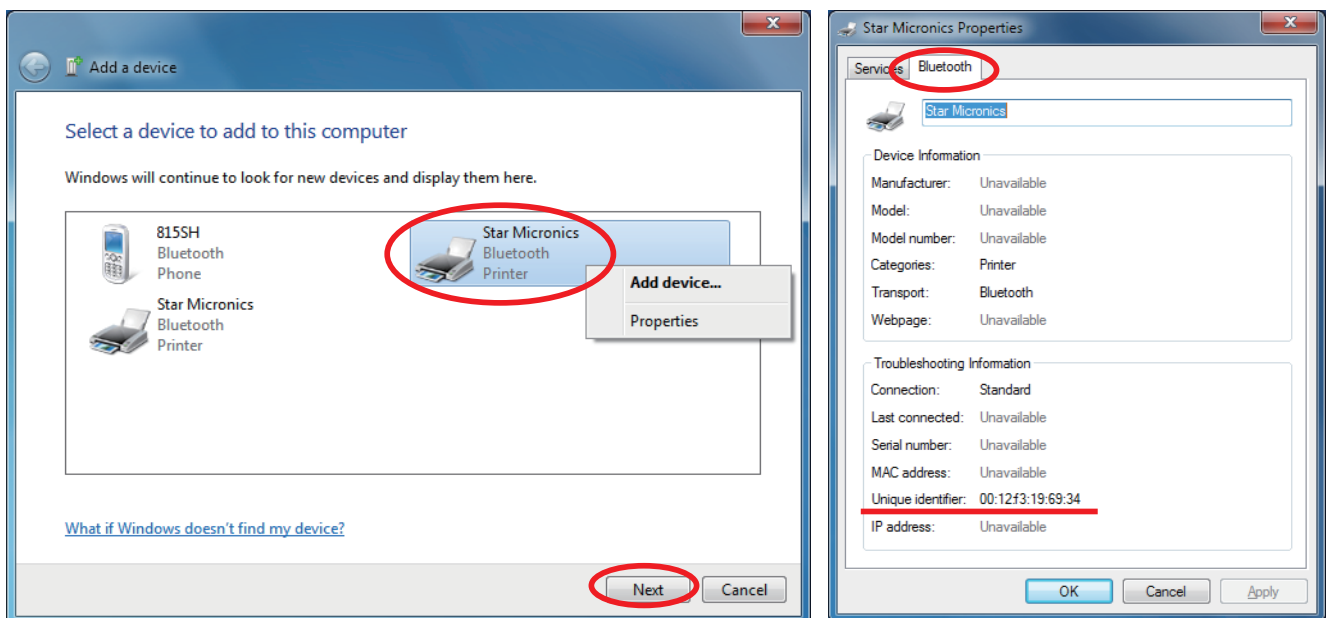
1. On the Control Panel, click "Devices and Printers". And click "Add a Device".



2. When the Pair with a wireless device window is displayed, set up the printer as instructed on the screen*, and then click [Next].

* See the "Hardware Manual" for more information on operating the printer.

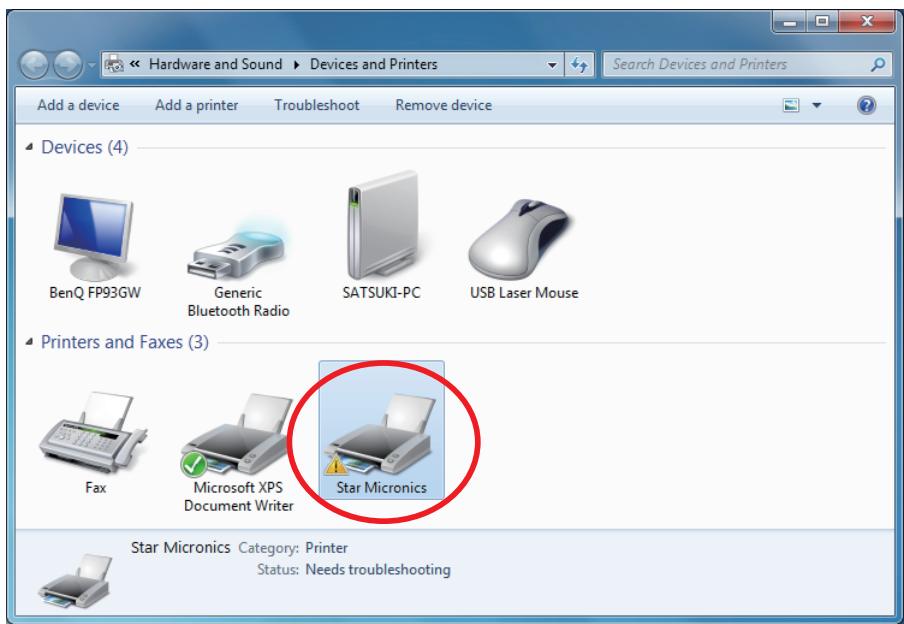
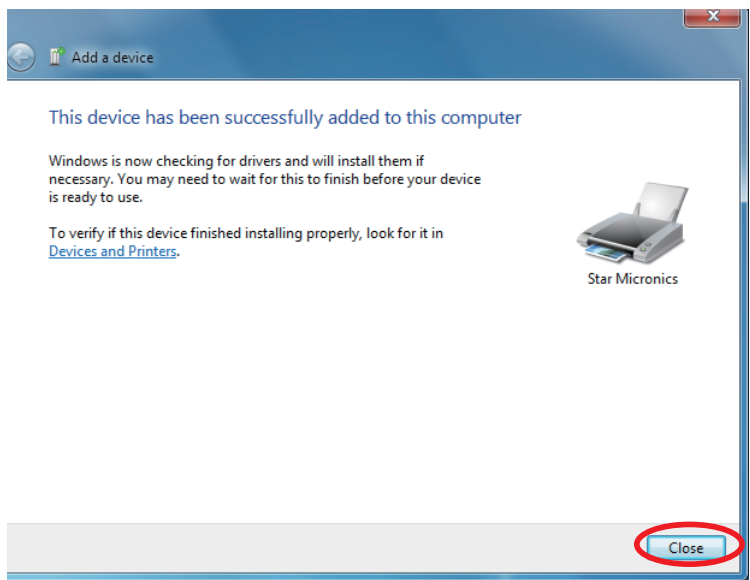
3. Select the Bluetooth device you want to add from the list of devices displayed, and then click [Next]. If multiple Bluetooth devices are found, you can right-click the printer, select [Properties], and then check the Bluetooth address to specify the printer you want to pair.



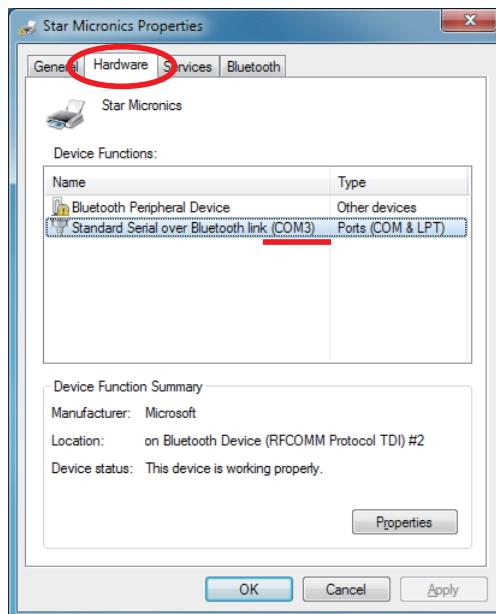
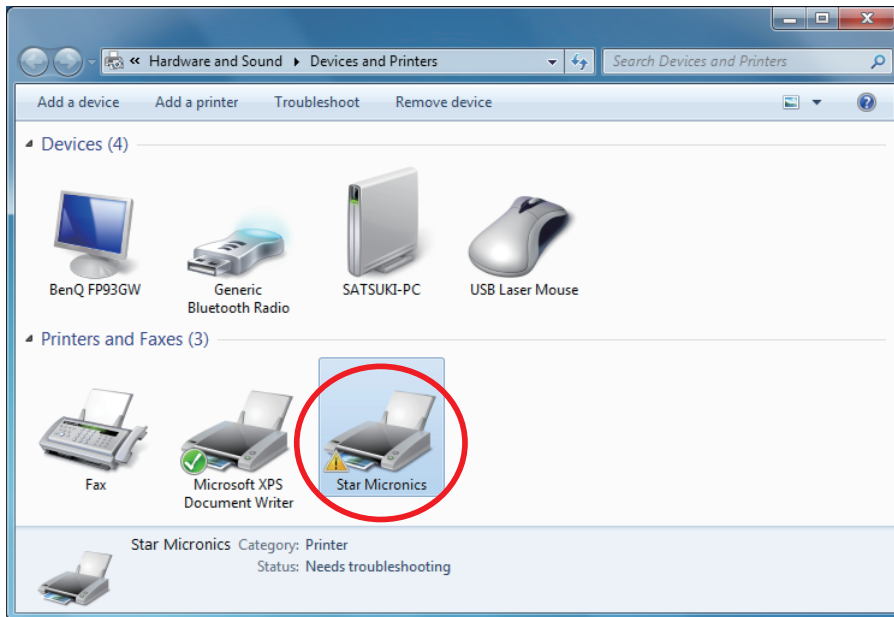
Checking the printer's Bluetooth address

The Bluetooth address is listed under ***Bluetooth Information*** on the test print sheet. To print a test sheet, turn on the printer while holding down the TSP65011: Feed button.

4. When pairing is complete, the printer is added to the Printers and Devices screen.



5. To check the virtual COM port assigned by pairing the Bluetooth device, go to the Devices and Printers screen, and then check the "Hardware" tab in Properties for the device that was added.



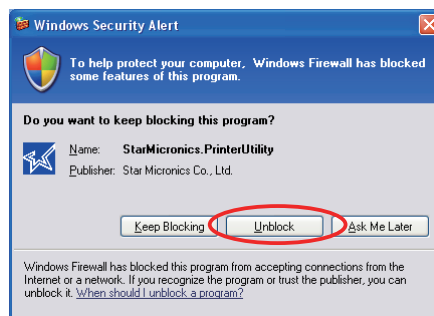
Appendix 3. How to Allow a program to communicate through Windows Firewall

To set Ethernet settings, need to change “Allow a program through Windows Firewall”.

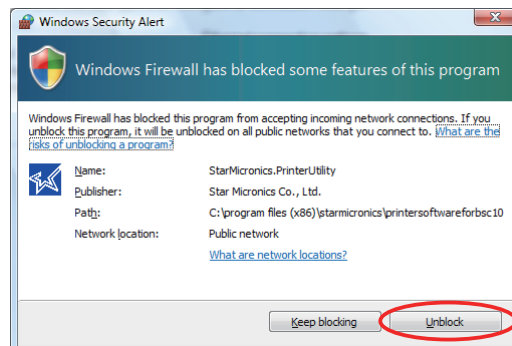
When the “Windows Security Alert” appears, change Firewall setting.

In case, “Windows Security Alert” screen do not appear, before executing Ethernet settings, follow the instructions on next pages Appendix 3.1 to change Windows Firewall setting.

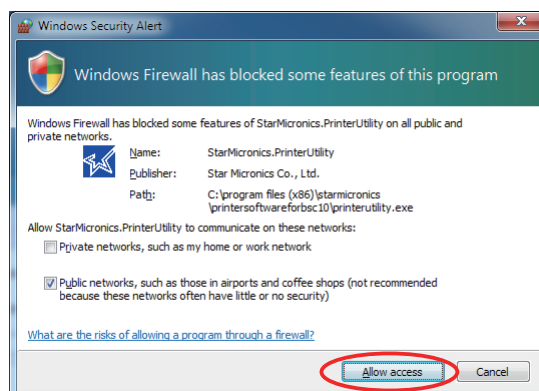
❖ Windows XP



❖ Windows Vista

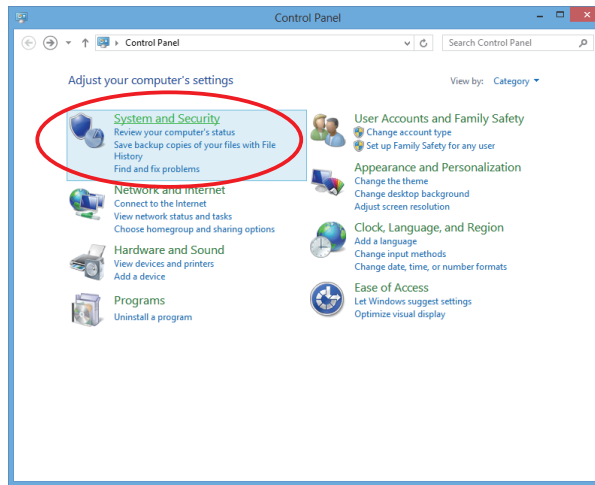


❖ Windows 7, 8, 8.1

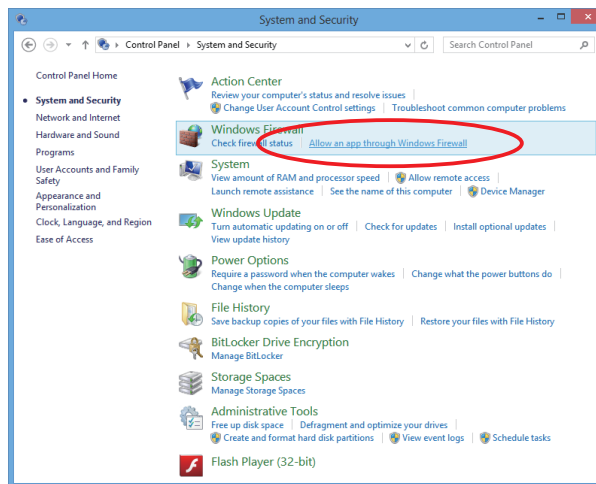


Appendix 3.1 Manual Setup for Windows Firewall

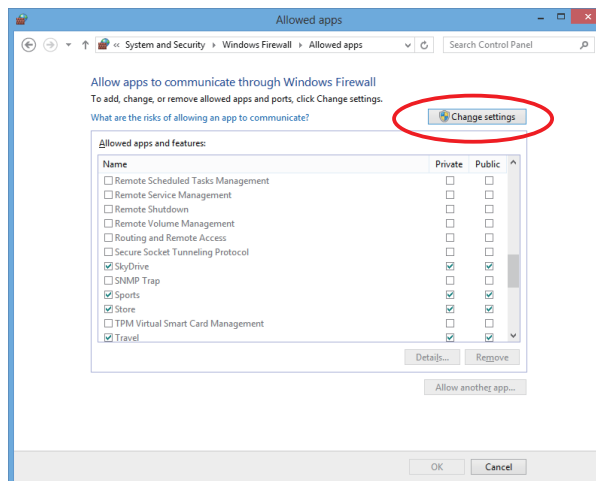
① On the Control Panel, Click [System and Security].



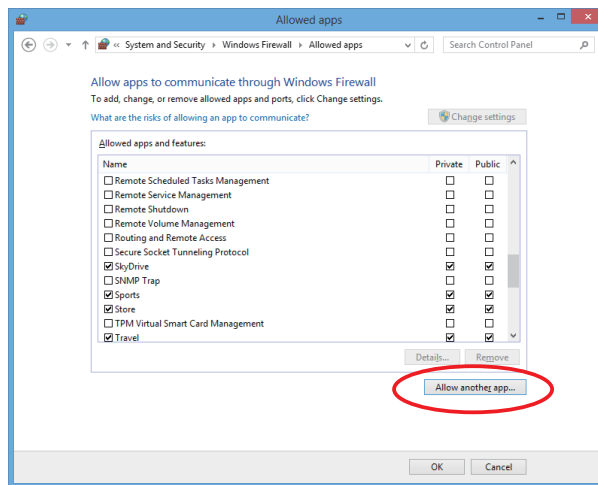
② Click [Allow an app through Windows Firewall] in [Windows Firewall].



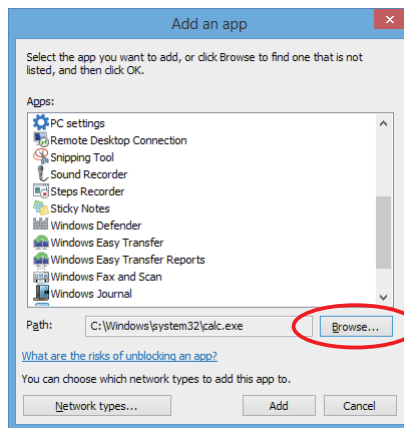
③ Click [Change Settings].



④ Click [Allow another app...].



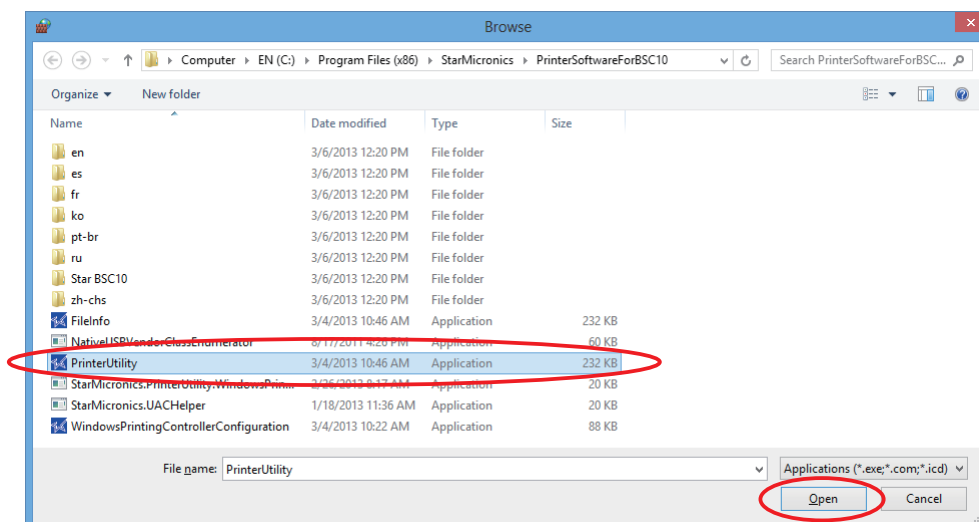
⑤ Click [Browse...].



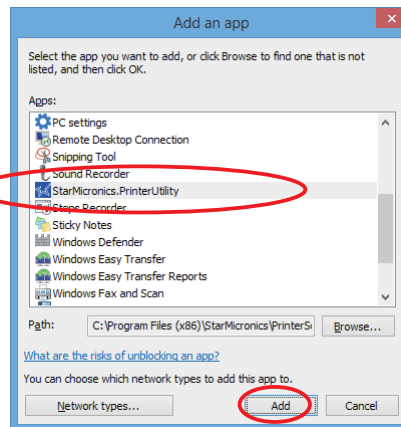
⑥ Select PrinterUtility.exe located in the following folder, and click [Open].

OS 32bit C:\Program Files\StarMicronics\PrinterSoftware\PrinterUtility.exe

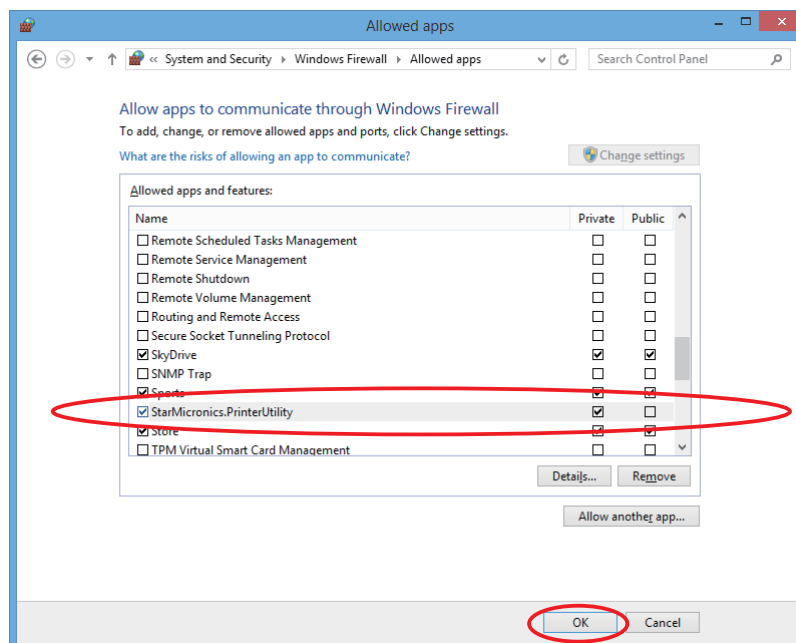
OS 64bit C:\Program Files (x86)\StarMicronics\PrinterSoftware\PrinterUtility.exe



⑦ Select "StarMicronics.PrinterUtility", and click [Add].



⑧ Confirm StarMicronics.PrinterUtility, put a checkmark to the left of it, and click [OK].





URL: <http://www.starmicronics.com/support/>